



Working Instruction, Mechanical

Applicable for Z780i, Z780a, TM506

CONTENTS

1	Introduction	3
1.1	Equipment.....	5
1.2	General cautions	6
1.3	Adhesives	6
2	Disassembly	7
2.1	Lower unit	8
2.1.1	Battery Cover and Battery	9
2.1.2	Lower Outer Cover Assembly	10
2.1.3	Speaker Box.....	13
2.1.4	PCBA	14
2.1.5	Hinge Stopper	16
2.1.6	Lower Inner Cover Assembly	17
2.2	Upper unit	18
2.2.1	Co-brand Down and Receiver Cover.....	19
2.2.2	Upper Outer Cover Assembly	21
2.2.3	Hinge FPC.....	23
2.2.4	LCD Frame and Upper Inner Cover Frame	24
3	Replacements.....	25
3.1	Battery Cover.....	26
3.2	Screw Cover.....	26
3.3	Screws in Lower Unit.....	26
3.4	Screws in Upper Unit	26
3.5	Lower Outer Cover	26
3.6	Volume Key.....	26
3.7	M2 Card Cover	26
3.8	Water Proof Rubber	27
3.9	Hinge Stopper.....	27
3.10	Lower Inner Cover.....	27
3.11	Upper Outer Cover	28
3.12	Hinge FPC	28
3.13	LCD Display	29
3.14	RF Cover	30
3.15	Vibrator.....	31
3.16	Hinge	32
3.17	Keypad	33
3.18	Dome Sheet with Guide Light	35
3.19	BB Shield Can Lid	37
3.20	System Connector.....	39
3.21	Strap Metal	40



3.22 Co-brand Down.....	41
3.23 Receiver Cover	42
3.24 Co-Brand Film.....	43
3.25 Co-brand Out	44
3.26 GPS Antenna	45
3.27 GPS PCBA.....	47
3.28 Gasket	48
3.29 Camera	49
3.30 Magnet.....	51
3.31 KRH Label	52
3.32 Liquid Intrusion Indicator	53
3.33 Receiver mesh	54
4 Reassembly	56
4.1 Upper unit	57
4.1.1 LCD Frame and Upper Inner Cover Assembly	58
4.1.2 Hinge FPC.....	59
4.1.3 Upper Outer Cover Assembly	60
4.1.4 Co-brand Down and Receiver Cover.....	61
4.2 Lower unit	63
4.2.1 Lower Inner Cover Assembly	64
4.2.2 Hinge Stopper	65
4.2.3 PCBA	66
4.2.4 Speaker Box.....	68
4.2.5 Lower Outer Cover Assembly	69
4.2.6 Battery and Battery Cover	72
5 Revision history	73

1 Introduction

Z780a



TM506



1.1 Equipment

SPECIAL TOOLS

- NTZ 122 459 Torque screwdriver (or equivalent)
- NTZ 112 288 Torx bit no. 5
- NTZ 112 478 R1 Torx bit no. 6
- NTZ 122 521 Flex film assembly tool
- NTZ 112 302/2 Front opening tool



STANDARD TOOLS

Standard tools have to be locally purchased

- Dentist hook
- Blunt pair of tweezers
- Guitar pick



ESD EQUIPMENT

Protect the phone from ESD damages whenever it has been opened by using:

- ESD wristband
- ESD gloves



LABEL EQUIPMENT

The following special equipment is required when replacing or installing a new label:

- Hot air flow solder station
- Zebra printer connected to computer



1.2 General cautions

The following cautions are considered to be generic for all phone models and will not be repeated in the Disassembly, Replacements and Reassembly sections:

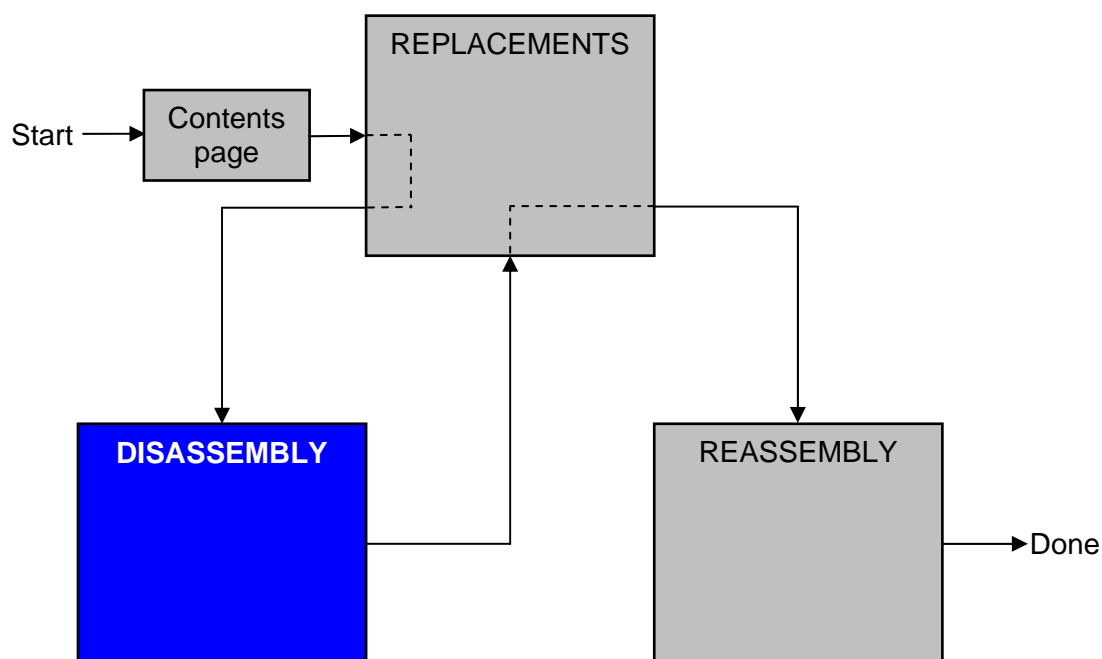
- **TURN OFF THE PHONE AND REMOVE THE SIM CARD BEFORE STARTING THE DISASSEMBLY!**
- **KEEP ALL CONTACT SURFACES CLEAN!**
- **BE CAREFUL WHEN USING TOOLS LIKE THE DENTIST HOOK, TWEEZERS, OPENING TOOLS, GUITAR PICK ETC. TO AVOID SCRATCHES OR DAMAGES TO THE EXTERIOR AND INTERIOR PARTS OF THE PHONE!**
- **BE CAREFUL NOT TO DAMAGE ANY CONTACT SPRINGS!**
- **REMEMBER TO REMOVE THE PROTECTION FOILS ON NEW PARTS SUCH AS THE LCD!**
- **NEVER TOUCH THE DISPLAY GLASS!**
- **USE AIR BLOW EQUIPMENT TO KEEP THE FRONT WINDOW AND DISPLAY MODULE DUST FREE!**

1.3 Adhesives

Use a dentist hook and/or the tweezers to remove old adhesives.
Clean the surface with isopropyl alcohol before attaching new adhesives.

2 Disassembly

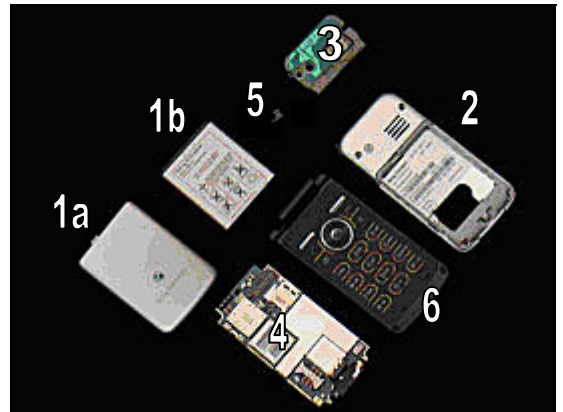
When you are going to replace a part being listed in *Replacements*, the instruction of that section usually begins by directing you to this *Disassembly* section with a specification of the instructions you have to carry out in order to disassemble the phone as far as needed before returning to *Replacements* for the actual replacement.



2.1 Lower unit

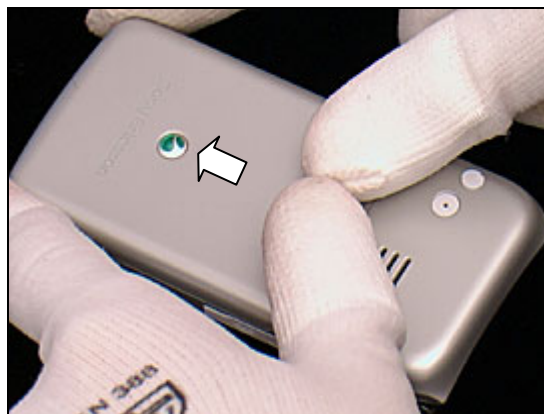
The disassembly is done in the following order:

1. Battery Cover (a) and Battery (b)
2. Lower Outer Cover Assembly
3. Speaker Box
4. PCBA
5. Hinge Stopper
6. Lower Inner Cover Assembly

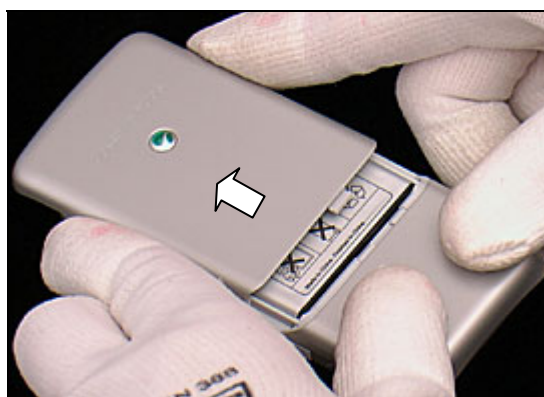


2.1.1 Battery Cover and Battery

Press the top of the battery cover and push it forward to open up a gap.



Remove the battery cover.



Lift the battery up from the slot as shown.



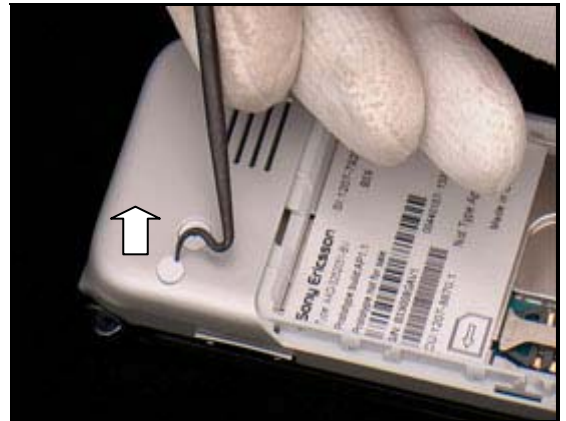
Remove the battery.



2.1.2 Lower Outer Cover Assembly

Use a dentist hook to remove one screw cover.

Note: Screw covers can't be reused and must be scrapped.



Use a dentist hook to remove the other screw cover.



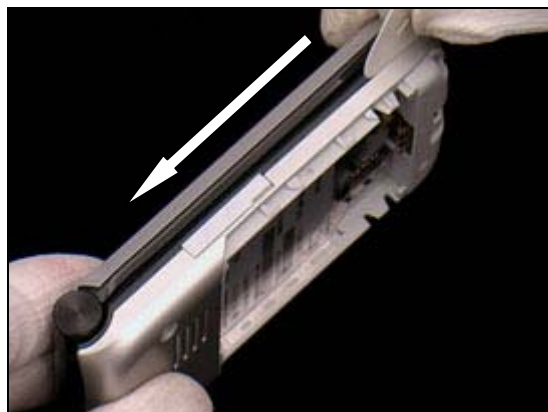
Use torx bit T6 to remove the four screws.



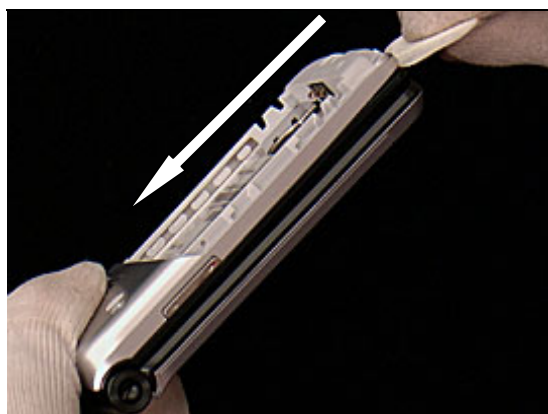
There are eight snap hooks located as shown that have to be unsnapped.



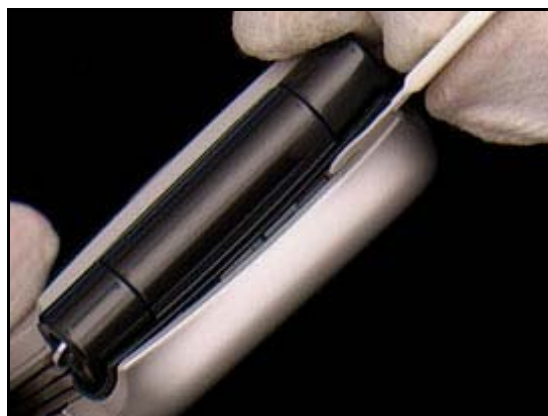
Insert the guitar pick from the system connector and slide along the side to unsnap the hooks.



Unsnap the hooks on the other side.



Unsnap the top side.



Use a pair of tweezers to remove the M2 card cover.

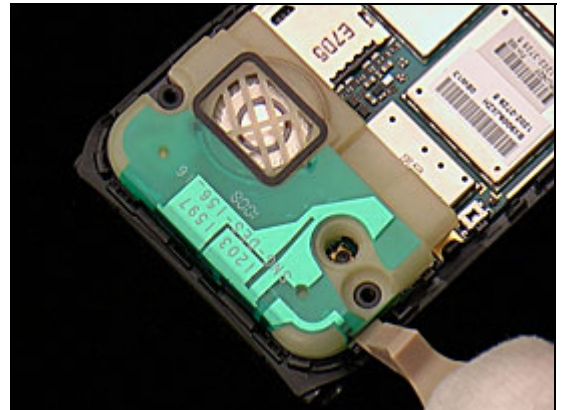


Lift to remove the lower outer cover.



2.1.3 Speaker Box

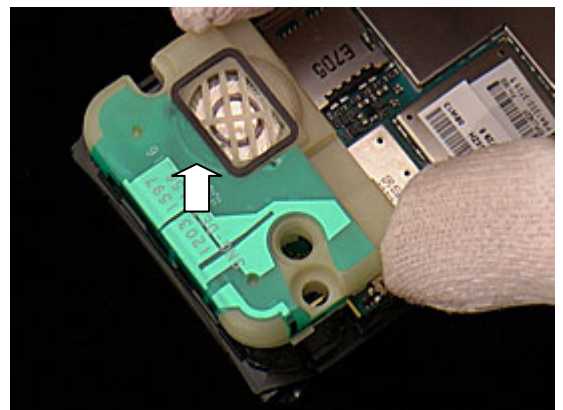
Use the front opening tool to unsnap the speaker box on one side.



Use the front opening tool to unsnap it on the other side.

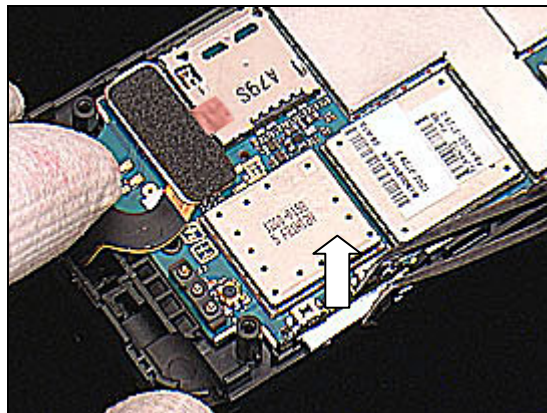


Lift and remove it.



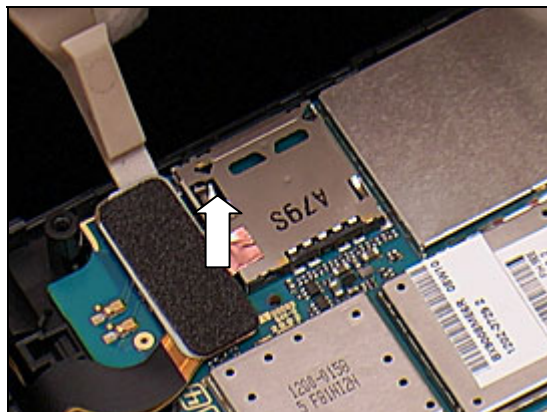
2.1.4 PCBA

Use a flex film assembly tool to remove the volume key.

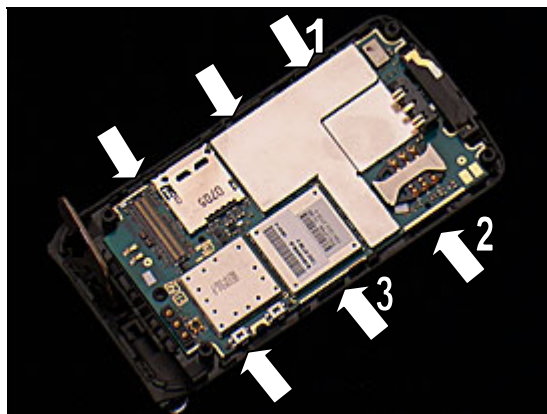


Use the front opening tool to disconnect the 80-pin connector.

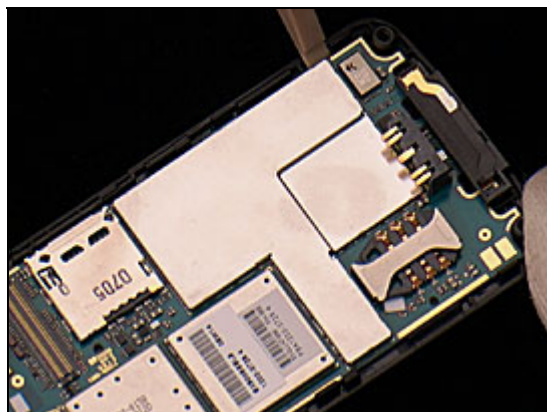
Note: Fold the copper foil to the gasket side after disconnecting it.



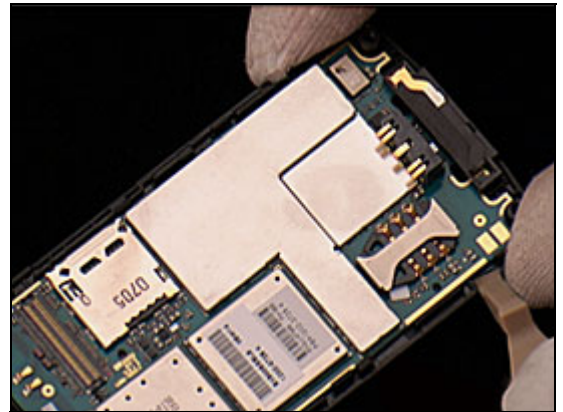
There are six hooks located as shown.



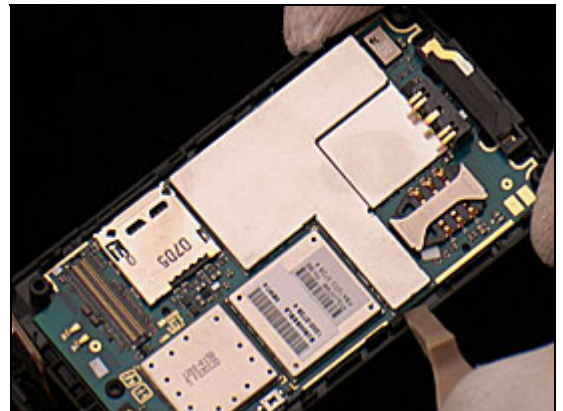
Use the front opening tool to unsnap the hook (1).



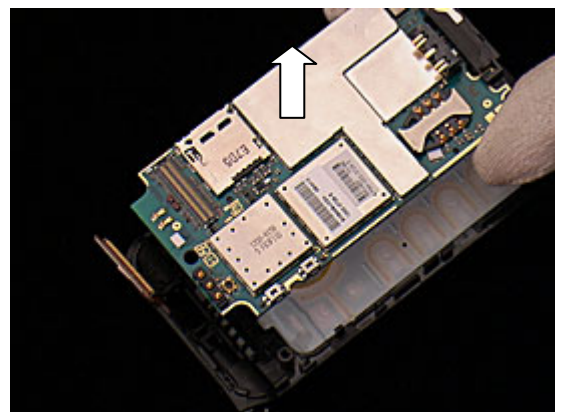
Unsnap the hook (2)



Unsnap the hook (3).

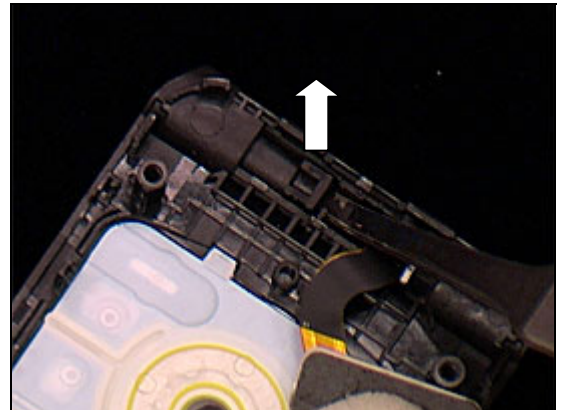


Lift and remove the PCBA.



2.1.5 Hinge Stopper

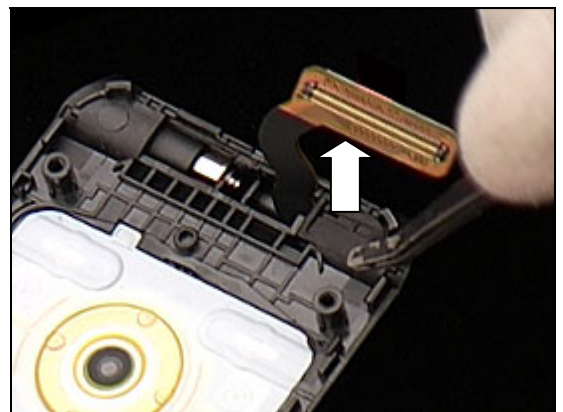
Use a flex film assembly tool to lift and remove the hinge stopper.



Use a flex film assembly tool to pull the hinge out of its cavity in the direction as shown.

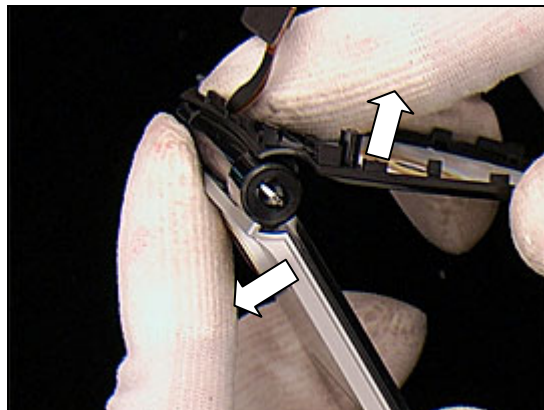


Use a flex film assembly tool to remove the water proof rubber.



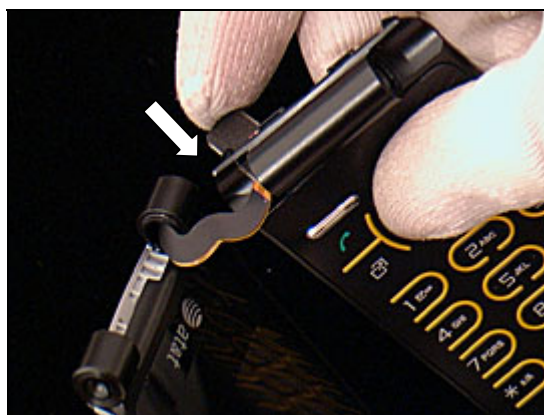
2.1.6 Lower Inner Cover Assembly

Separate the lower inner cover and the upper unit from the hinge section.



Slide the hinge FPC with the 80-pin connector smoothly through the hinge section.

Note: Be careful not to damage the 80-pin connector.



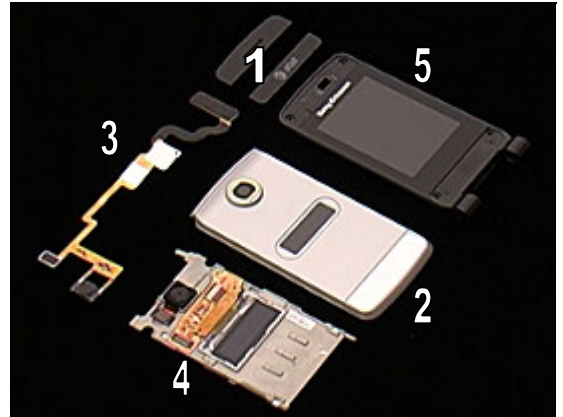
Separate the lower inner cover and the upper unit completely.



2.2 Upper unit

The disassembly is done in the following order:

1. Co-brand Down and Receiver Cover
2. Upper Outer Cover Assembly
3. Hinge FPC
4. LCD Frame
5. Upper Inner Cover Assembly



2.2.1 Co-brand Down and Receiver Cover

Use a dentist hook to loosen the co-brand down.

Note: The released co-brand down can't be reused and must be scrapped.



Use a flex film assembly tool to remove the co-brand down.



Use a dentist hook to loosen the receiver cover.

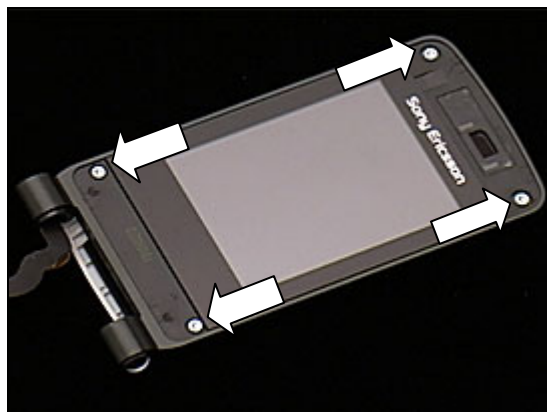
Note: The released receiver cover can't be reused and must be scrapped.



Use a flex film assembly tool to remove the receiver cover.



Use torx bit 5 to remove the four screws.



2.2.2 Upper Outer Cover Assembly

Use a guitar pick to unsnap the upper outer cover assembly on one side.



Use a guitar pick to unsnap the corner.



Use a guitar pick to unsnap it on the other side.

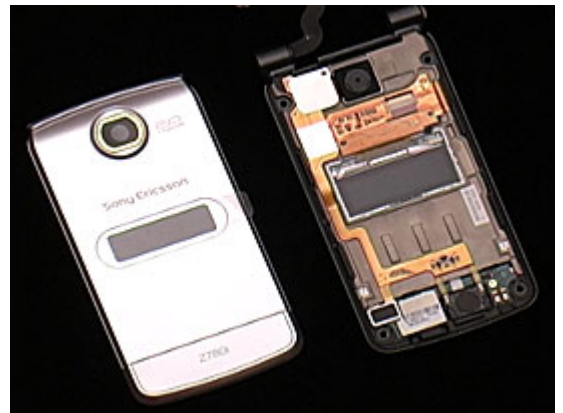


Upper Outer Cover Assembly *continued*

Lift the upper outer cover and remove it from the hinge section.

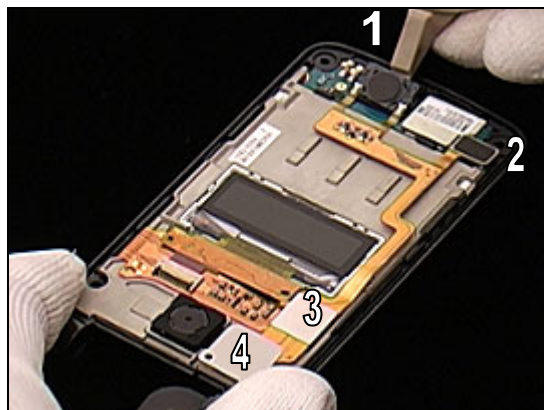


Separate the LCD frame and the upper outer cover assembly.

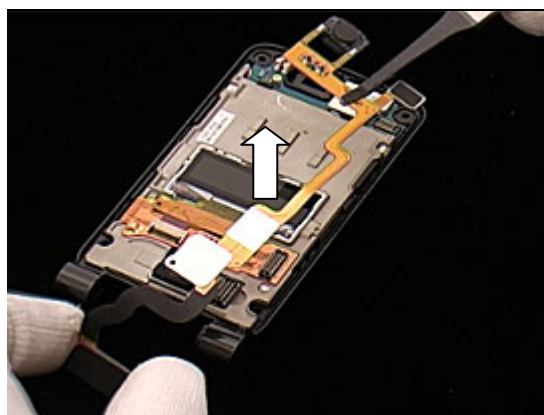


2.2.3 Hinge FPC

Use a front opening tool to disconnect the receiver (1), GPS connector (2), LCD connector (3) and camera connector (4) on the hinge FPC.

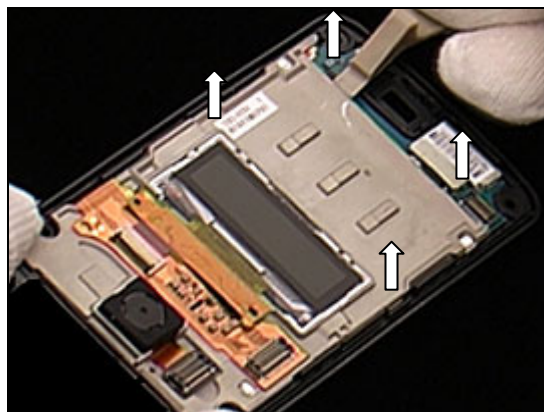


Remove the hinge FPC.

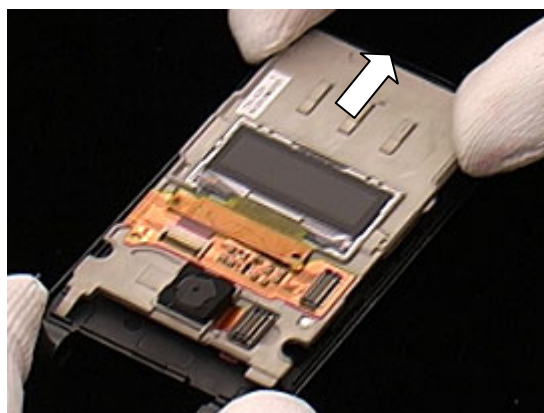


2.2.4 LCD Frame and Upper Inner Cover Frame

Use the front opening tool to unsnap the four hooks and loosen the LCD frame from the cavity of the inner cover frame.



Lift the LCD frame at an angle and pull it in the direction as the arrow.



Separate the LCD frame and the upper inner cover assembly.



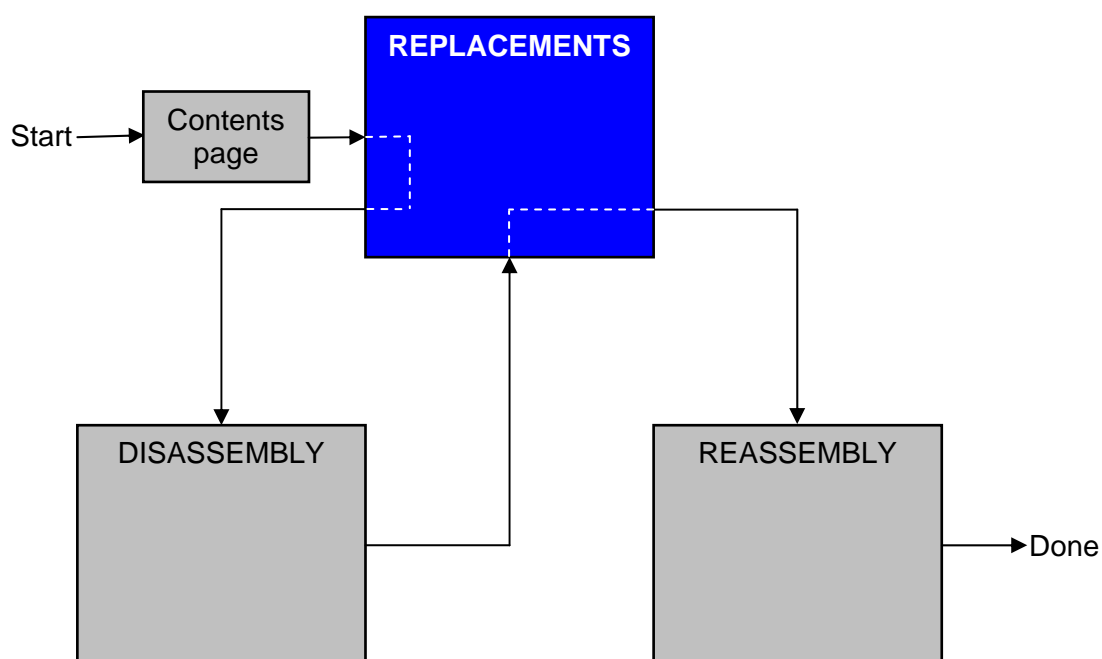
3 Replacements

Search for the part to be replaced on the Contents page and go to that instruction to be found in this *Replacements* section.

The instruction usually begins by directing you to the *Disassembly* section with a specification of the instructions you have to carry out in order to disassemble the phone as far as needed before the actual replacement.

Go back to this *Replacements* section and carry out the instruction.

The instruction usually ends by directing you to the *Reassembly* section with a specification of the instructions you have to carry out in order to reassemble the phone.



3.1 Battery Cover

Follow the 2.1.1 Disassembly instructions.

Prepare a new battery cover.

Follow the 4.2.6 Reassembly instructions.

3.2 Screw Cover

Follow the 2.1.2 Disassembly instructions.

Prepare a new pair of screw cover.

Follow the 4.2.6 Reassembly instructions.

3.3 Screws in Lower Unit

Follow the 2.1.2 Disassembly instructions.

Prepare four new screws.

Follow the 4.2.5 Reassembly instructions.

3.4 Screws in Upper Unit

Follow the 2.2.1 Disassembly instructions.

Prepare four new screws.

Follow the 4.1.4 Reassembly instructions.

3.5 Lower Outer Cover

Follow the 2.1.1 – 2.1.2 Disassembly instructions.

Prepare a new lower outer cover.

Follow the 4.2.1 – 4.2.5 Reassembly instructions.

3.6 Volume Key

Follow the 2.1.1 – 2.1.4 Disassembly instructions.

Prepare a new volume key.

Follow the 4.2.1 – 4.2.3 Reassembly instructions.

3.7 M2 Card Cover

Follow the 2.1.1 – 2.1.2 Disassembly instructions.

Prepare a new M2 card cover.

Follow the 4.2.1 – 4.2.5 Reassembly instructions.

3.8 Water Proof Rubber

Follow the 2.1.1 – 2.1.5 Disassembly instructions.

Prepare a new water proof rubber.

Follow the 4.2.1 – 4.2.2 Reassembly instructions.

3.9 Hinge Stopper

Follow the 2.1.1 – 2.1.5 Disassembly instructions.

Prepare a new hinge stopper.

Follow the 4.2.1 – 4.2.2 Reassembly instructions.

3.10 Lower Inner Cover

REMOVAL

Follow 2.1.1 to 2.1.6 Disassembly instructions.

Follow 3.14 Removal instructions.

INSTALLATION

Prepare a new lower inner cover.

Follow 3.14 Installation instructions.

Follow 4.2.1 Reassembly instructions.

3.11 Upper Outer Cover

REMOVAL

Follow 2.2.1 – 2.2.2 Disassembly instructions.

Follow 3.24 Removal instructions.

Follow 3.21 Removal instructions (for Z780i and Z780a).

INSTALLATION

Prepare a new upper outer cover.

Follow 3.24 Installation instructions.

Follow 3.21 Installation instructions (for Z780i and Z780a) and 3.22 Installation instructions (for TM506)

Follow 4.1.3 – 4.1.4 Reassembly instructions.

3.12 Hinge FPC

REMOVAL

Follow 2.1.1 – 2.1.3 Disassembly instructions.

Use the front opening tool to disconnect the 80-pin connector.

Follow 2.1.5 – 2.2.3 Disassembly instructions.

INSTALLATION

Prepare a new hinge FPC.

Follow 4.1.2 – 4.2.2 Reassembly instructions.

Connect the 80-pin connector.

Follow 4.2.4 – 4.2.6 Reassembly instructions.

3.13 LCD Display

REMOVAL

Follow 2.2.1 — 2.2.4 Disassembly instructions.

Follow 3.28 Removal instructions.

INSTALLATION

Prepare a new LCD.

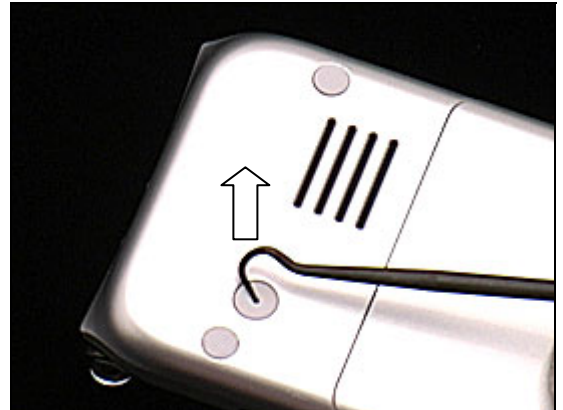
Follow 3.28 Installation instructions.

Follow 4.1.1 — 4.1.4 Reassembly instructions.

3.14 RF Cover

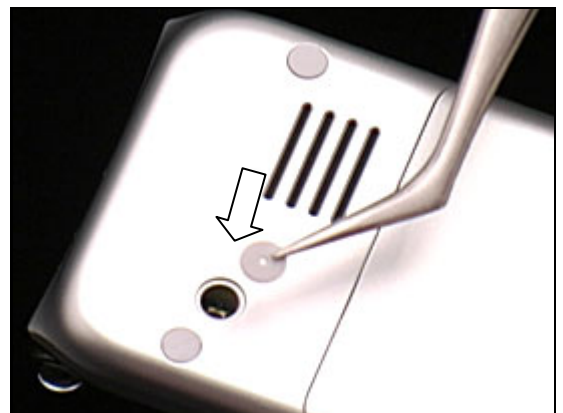
REMOVAL

Use a dentist hook to remove the RF cover.



INSTALLATION

Use a pair of tweezers to install a new RF cover.

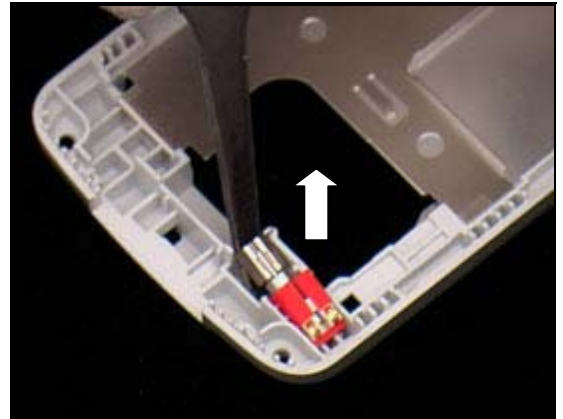


3.15 Vibrator

REMOVAL

Follow 2.1.1 to 2.1.2 Disassembly instructions.

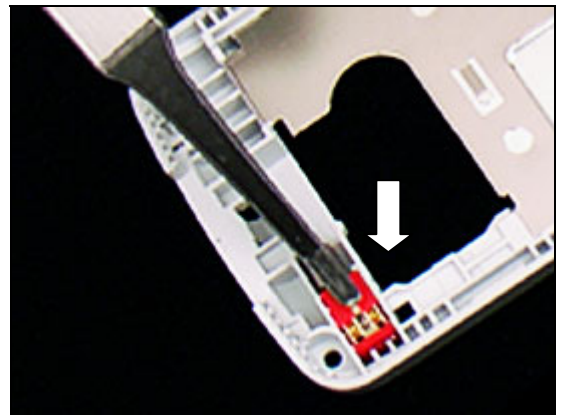
Use a flex film assembly tool to remove the vibrator.



INSTALLATION

Prepare a new vibrator and put it in place.

Follow 4.2.5 to 4.2.6 Reassembly instructions.



3.16 Hinge

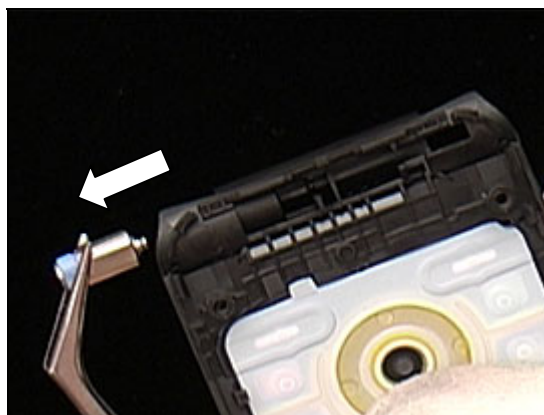
REMOVAL

Follow 2.1.1 to 2.1.5 Disassembly instructions.

Use a flex film assembly tool to push the hinge out of the hinge section.



Use a pair of tweezers to remove the hinge from the hinge section.

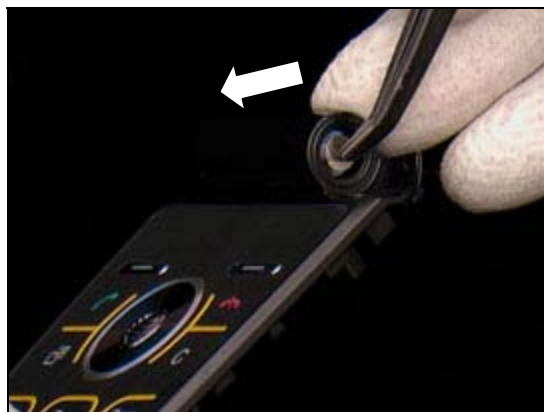


INSTALLATION

Prepare a new hinge.

Use a flex film assembly tool to insert it into its cavity.

Follow 4.2.1 to 4.2.6 Reassembly instructions.



3.17 Keypad

REMOVAL

Insert a dentist hook beneath the power key to loosen the key pad.

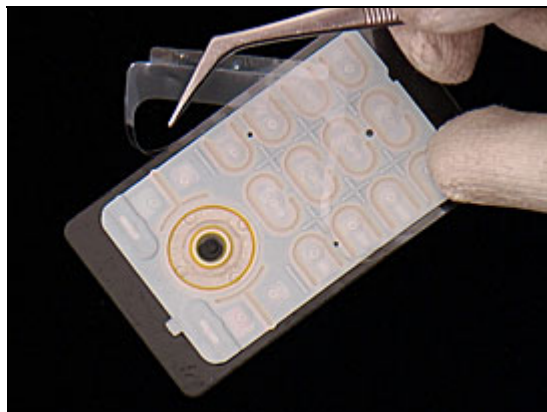


Use the flex film assembly tool to peel off the key pad.



INSTALLATION

Use a pair of tweezers to peel off the protection paper off the new key pad.



Use the flex film assembly and your fingers to attach the new key pad on the inner lower cover.



Use your fingers to press around the key pad in position to secure the attachment.

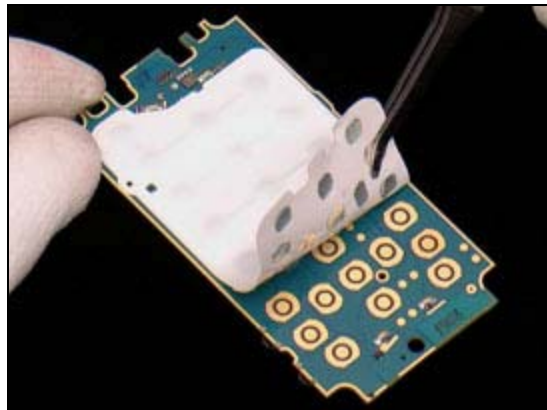


3.18 Dome Sheet with Guide Light

REMOVAL

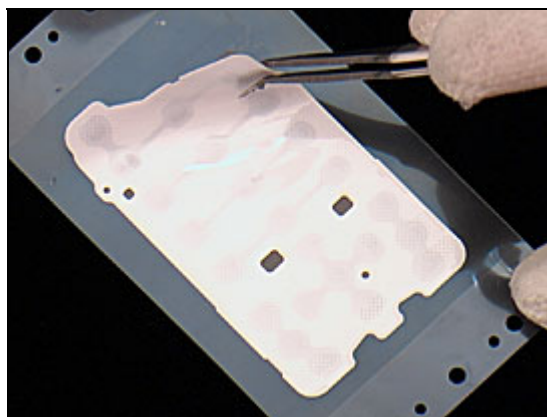
Follow 2.1.1 – 2.1.4 Disassembly instructions.

Use a flex film assembly tool to remove the dome sheet with guide light.

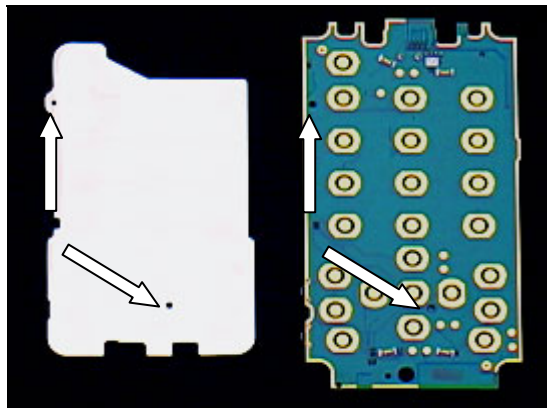


INSTALLATION

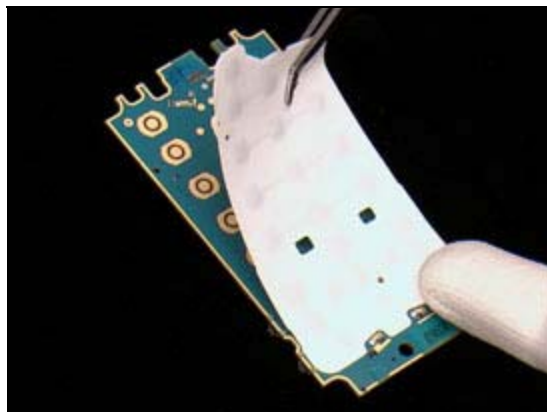
Use a flex film assembly tool to peel off the new dome sheet from the protection paper.



Note: Make sure that the guiding holes on the dome sheet correspond to the holes on the PCBA.

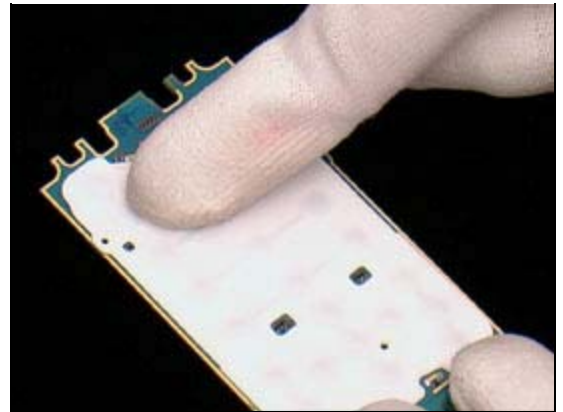


Use the flex film assembly tool and your fingers to position the dome sheet according to the guiding holes.



Use your finger to press the dome sheet to secure the attachment.

Follow 4.2.3 — 4.2.6 Reassembly instructions.



3.19 BB Shield Can Lid

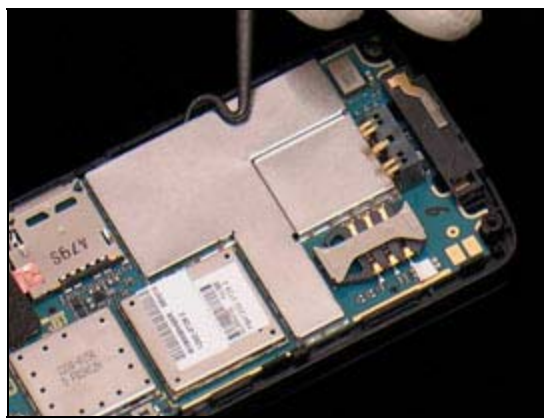
REMOVAL

Follow 2.1.1 – 2.1.4 Disassembly instructions.

Use the dentist hook to unsnap the BB shield can lid on one side.



Use the dentist hook to unsnap the BB shield can lid on the other side.



Remove the BB shield can lid.



INSTALLATION

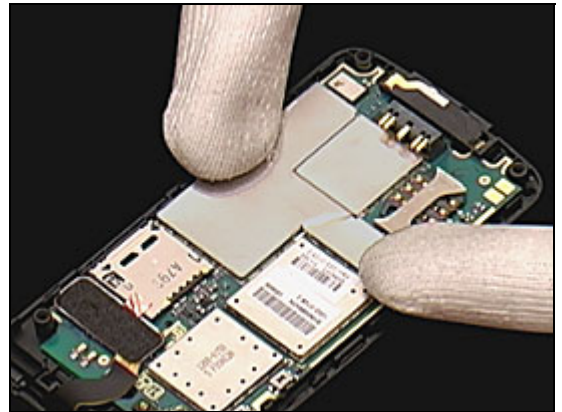
Prepare a new BB shield can lid.

Position a new BB shield can lid in place.



Use your fingers to press it.

Follow 4.2.4 — 4.2.6 Reassembly instructions.

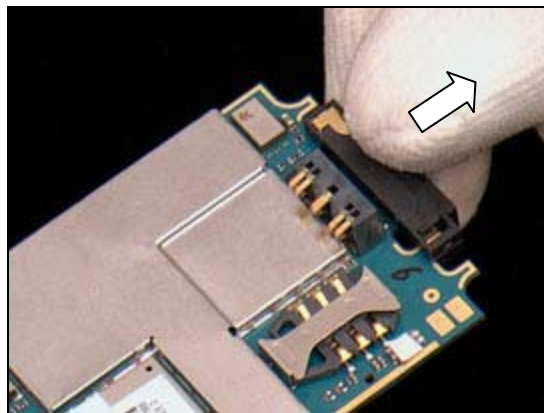


3.20 System Connector

REMOVAL

Follow 2.1.1 — 2.1.4 Disassembly instructions.

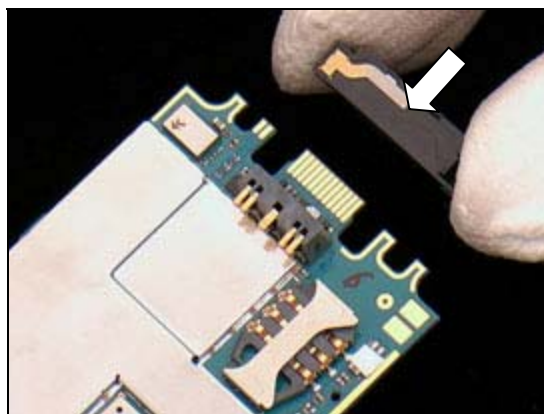
Use your fingers to remove the system connector.



INSTALLATION

Position a new system connector in place. Visually inspect that the system connector is correctly positioned.

Follow 4.2.3 — 4.2.6 Reassembly instructions.



3.21 Strap Metal

REMOVAL

Follow 2.1.1 — 2.1.6 Disassembly instructions.

Use a flex film assembly tool to push the strap metal inward.

Remove the strap metal.



INSTALLATION

Use a pair of tweezers to insert a new strap metal into hinge section.



Use the flex film assembly tool to push the strap metal into position.

Follow 4.1.1 — 4.1.6 Reassembly instructions.



3.22 Co-brand Down

REMOVAL

Follow 2.2.1 Disassembly instructions.

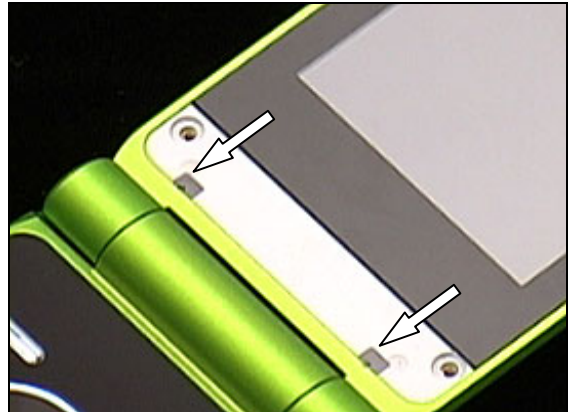
Replace the co-brand film underneath the co-brand down if there are any damage.

Follow 3.21 Replacement Instructions.

INSTALLATION

Prepare a new co-brand down.

Follow 4.1.4 Reassembly instructions.



3.23 Receiver Cover

REMOVAL

Follow 2.2.1 Disassembly Instructions.

Replace the co-brand film underneath the receiver cover if there are any damage as shown in the picture.

Follow 3.21 Replacement Instructions.

INSTALLATION

Follow 4.1.4 Reassembly Instructions.



3.24 Co-Brand Film

There are four co-brand films located as shown in the picture for some kind of the mobile phone.



REMOVAL

Follow 2.2.1 Disassembly instructions.

Use a dentist hook to remove the pair of co-brand film if they are damaged.



INSTALLATION

Use a pair of tweezers to position a pair of new co-brand film.

Note: Clean the surface with isopropyl alcohol before attaching new adhesives.

Follow 4.1.4 Reassembly instructions.



3.25 Co-brand Out

REMOVAL

Note: Only Z780i and Z780a have the co-brand out.

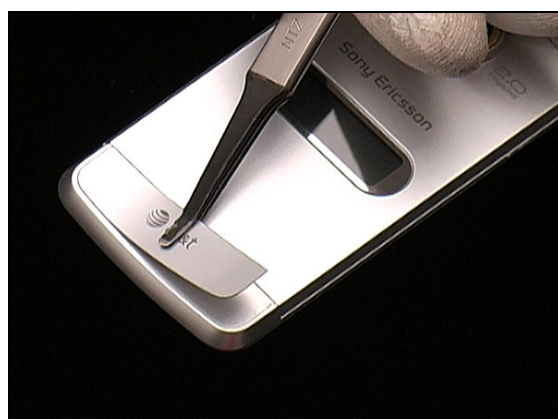
Carefully insert the dentist hook under the co-brand out to loosen it.

Note: Be careful not to scratch the upper outer cover assembly in this operation.

Use a flex film assembly tool to remove the co-brand out.

INSTALLATION

Use a flex film assembly tool to attach the new co-brand out in position.

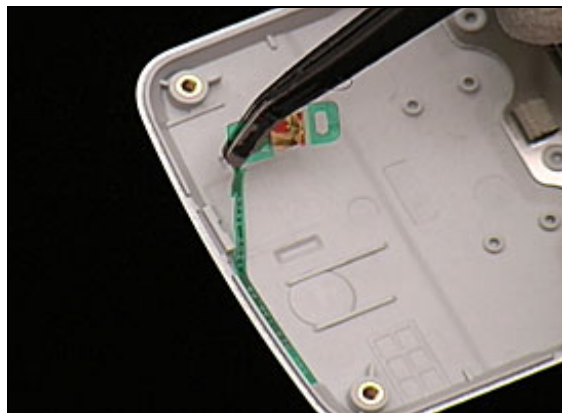


3.26 GPS Antenna

REMOVAL

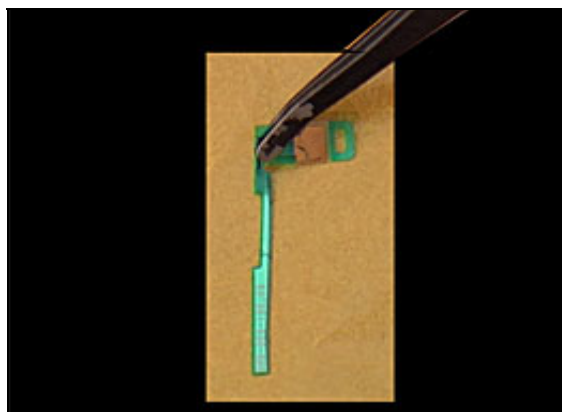
Follow 2.2.1 – 2.2.2 Disassembly instructions.

Use a flex film assembly tool to remove the GPS antenna.

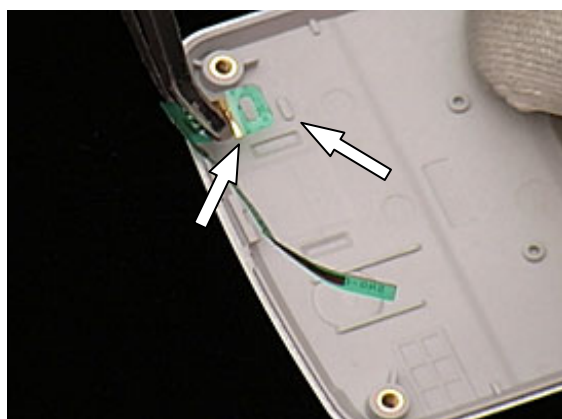


INSTALLATION

Use the flex film assembly to peel off a new antenna from the protection paper.



Make sure the guiding hole corresponds to the antenna.

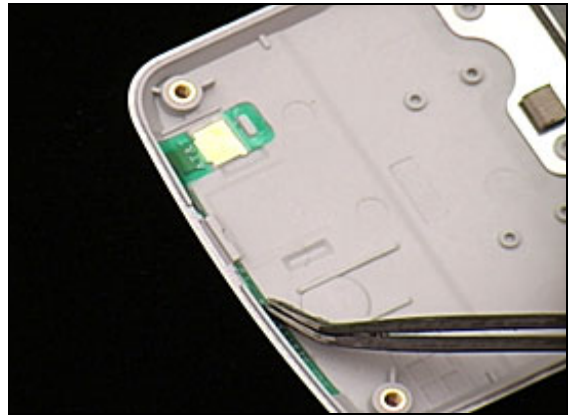


Use the flex film assembly tool to position the antenna according to the guiding hole.



Use the flex film assembly tool to secure the attachment.

Follow 4.1.3 – 4.1.4 Reassembly instructions.

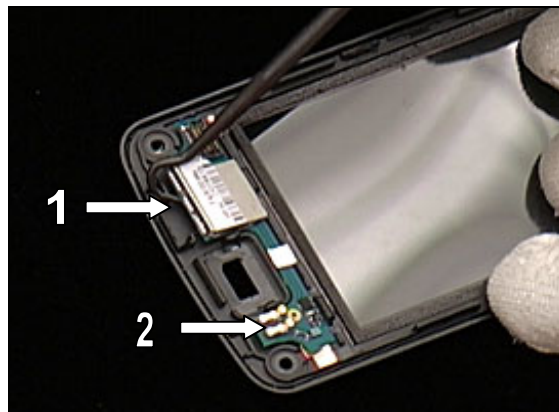


3.27 GPS PCBA

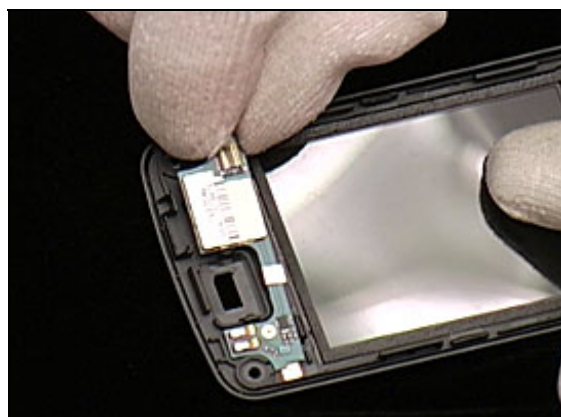
REMOVAL

Follow 2.2.1 – 2.2.4 Disassembly instructions.

Use a dentist hook to loosen the GPS PCBA at (1) and (2) as indicated by the arrows.



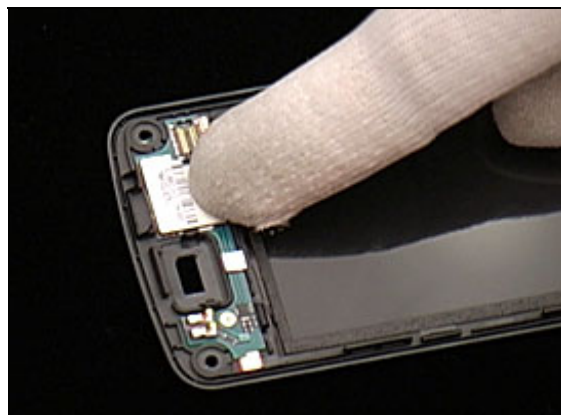
Use fingers to remove the GPS PCBA.



INSTALLATION

Position a new GPS PCBA in place.
Use your fingers to press it to secure the attachment.

Follow 4.1.1 – 4.1.6 Reassembly instructions.



3.28 Gasket

REMOVAL

Follow 2.1.1 — 2.1.6 Disassembly instructions.

Use the flex film assembly tool to peel off the gasket.



INSTALLATION

Prepare and attach a new gasket on the hinge FPC.

Follow 4.1.2 — 4.1.4 Reassembly instructions.

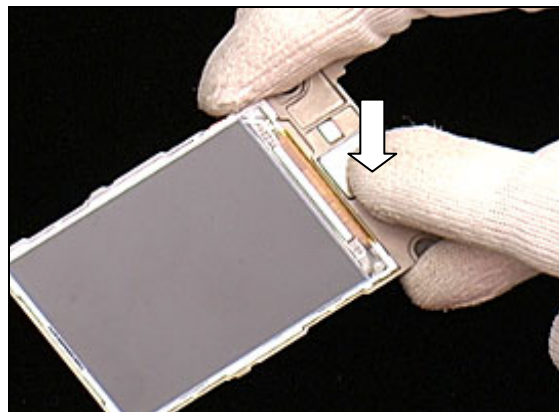


3.29 Camera

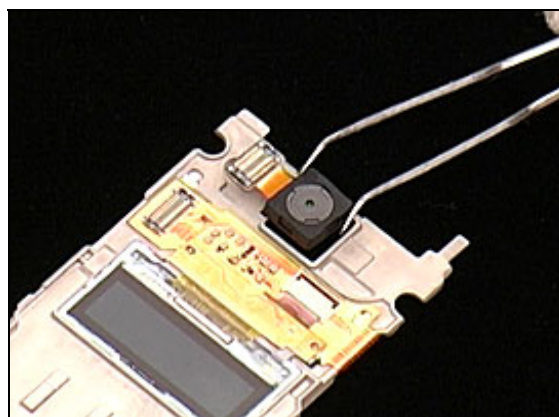
REMOVAL

Follow 2.2.1 – 2.2.4 Disassembly instructions.

Remove the camera by pushing it from behind with fingers.

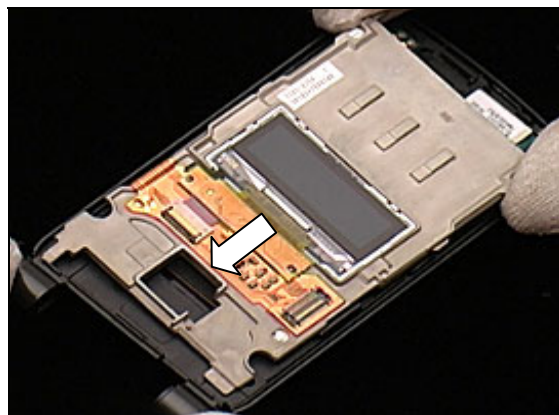


Use a flex film assembly tool to remove the camera.

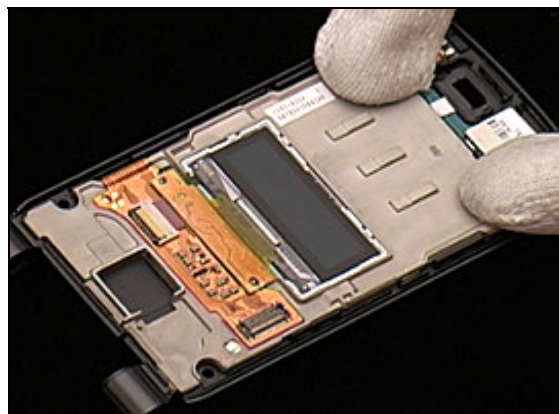


INSTALLATION

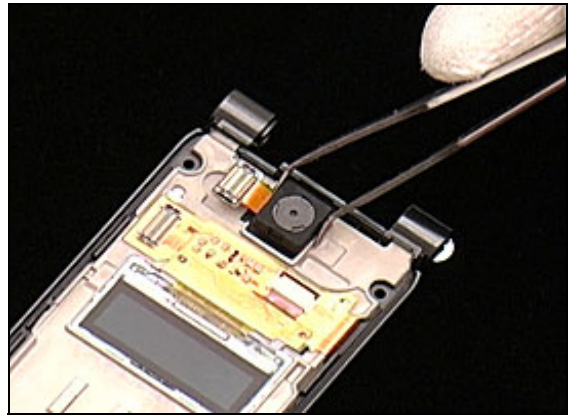
Insert the LCD frame without the camera into the hinge section.



Use your fingers to snap it into its cavity of the inner cover assembly.

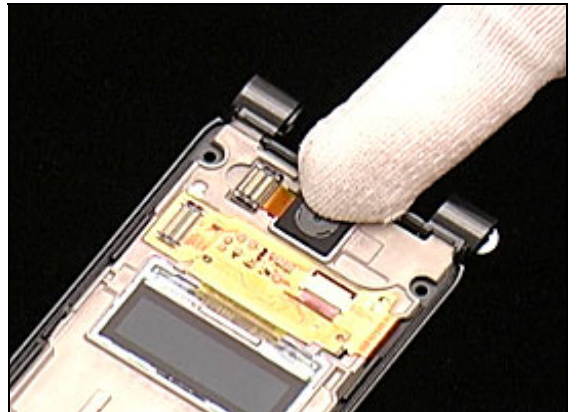


Prepare and install a new camera on the LCD frame.



Use your finger to press the camera into position.

Follow 4.1.2 — 4.1.4 Reassembly instructions.



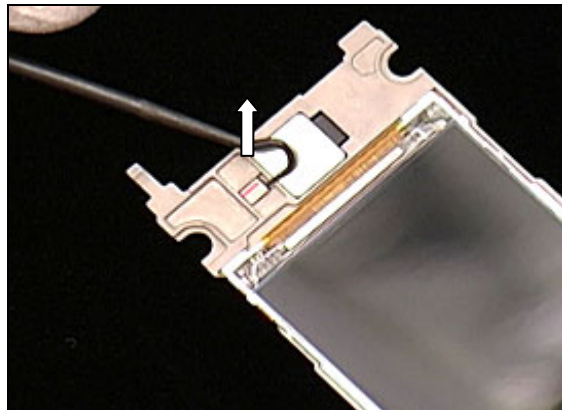
3.30 Magnet

REMOVAL

Follow 2.2.1 — 2.2.4 Disassembly instructions.

Insert a dentist hook under the magnet to detach and then remove it.

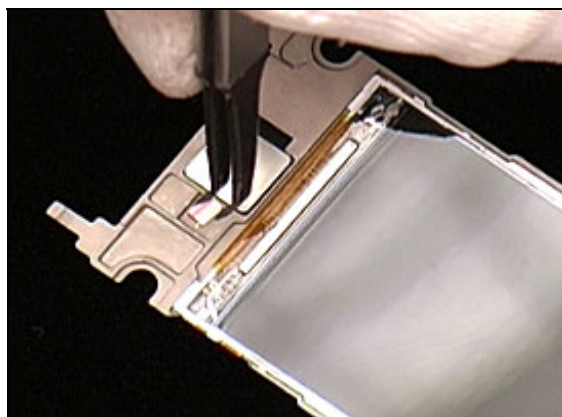
Note: Record the orientation indicated by the red line on the magnet.



INSTALLATION

Use a flex film assembly tool to locate a new magnet in the cavity in previous orientation.

Follow 4.1.1 — 4.1.4 Reassembly instructions.



3.31 KRH Label

REMOVAL

Follow 2.1.1 Disassembly instructions.

Read the old label and/or write the information into the "Label make" program before removal.

Use a hot air blower and a dentist hook or a pair of tweezers to remove the KRH label without causing scratches.

Note: Clean the surface with isopropyl alcohol before attaching new adhesives.



INSTALLATION

Check that the proper label format is loaded in the Zebra printer. Write a new label by using the program "Label make" and check that the printing is OK.

Place the new label onto the frame as shown in the picture.

Follow 4.2.6 Reassembly instructions.



3.32 Liquid Intrusion Indicator

REMOVAL

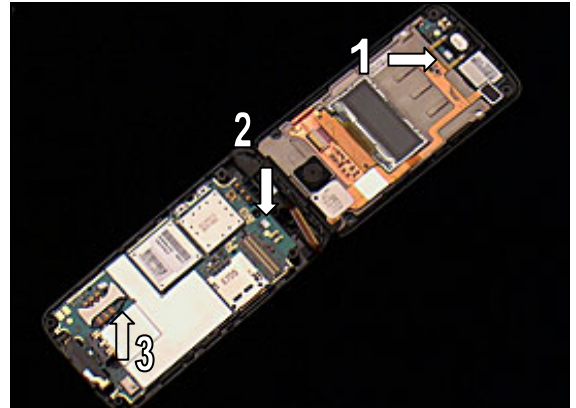
There are three indicators located as shown.

Note: indicator 3 is running change to right-upper side of SIM connector from left-upper side.

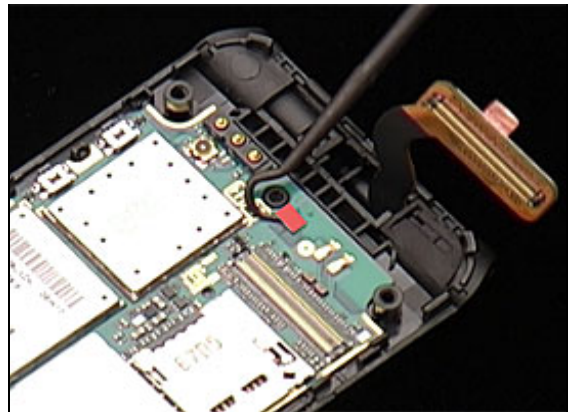
Follow 2.2.1 — 2.2.2 Disassembly instructions for indicator 1 in the upper unit.

Follow 2.1.1 — 2.1.3 Disassembly instructions for indicator 2 in the lower unit.

Follow 2.1.1 — 2.1.2 Disassembly instructions for indicator 3 in the lower unit.

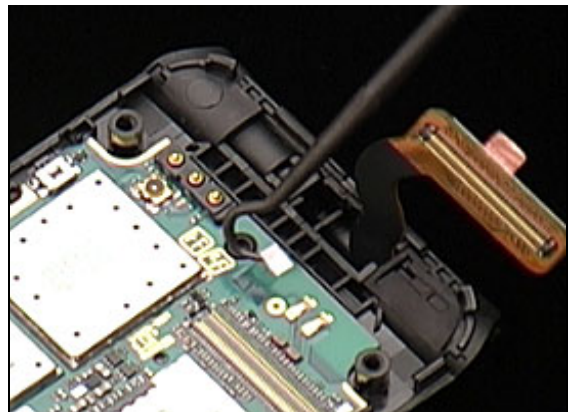


Use a dentist hook to remove the liquid intrusion indicator.

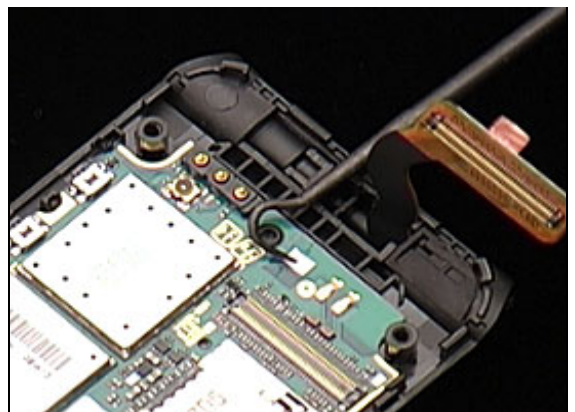


INSTALLATION

Use a dentist hook to attach a new one.



Press to secure the attachment.



Follow 4.1.3 — 4.1.4 Reassembly instructions for indicator 1.

Follow 4.2.4 — 4.2.6 Reassembly instructions for indicator 2.

Follow 4.2.5 — 4.2.6 Reassembly instructions for indicator 3.

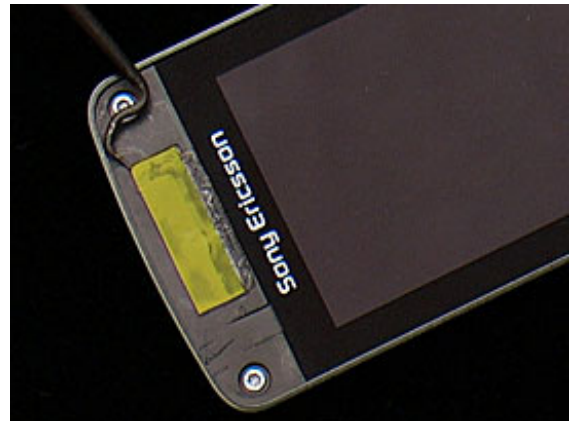
3.33 Receiver mesh

REMOVAL

Remove Receiver cover(can't be re-used)



Remove Receiver mesh(can't be re-used)



INSTALLATION

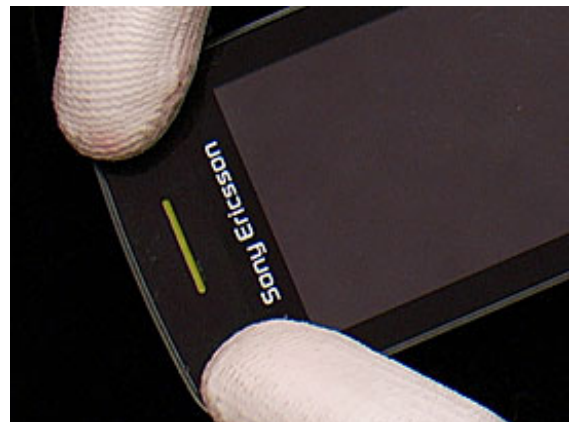
Attach a new Receiver mesh on Upper inner Cover.



Attach a new Receiver Cover.

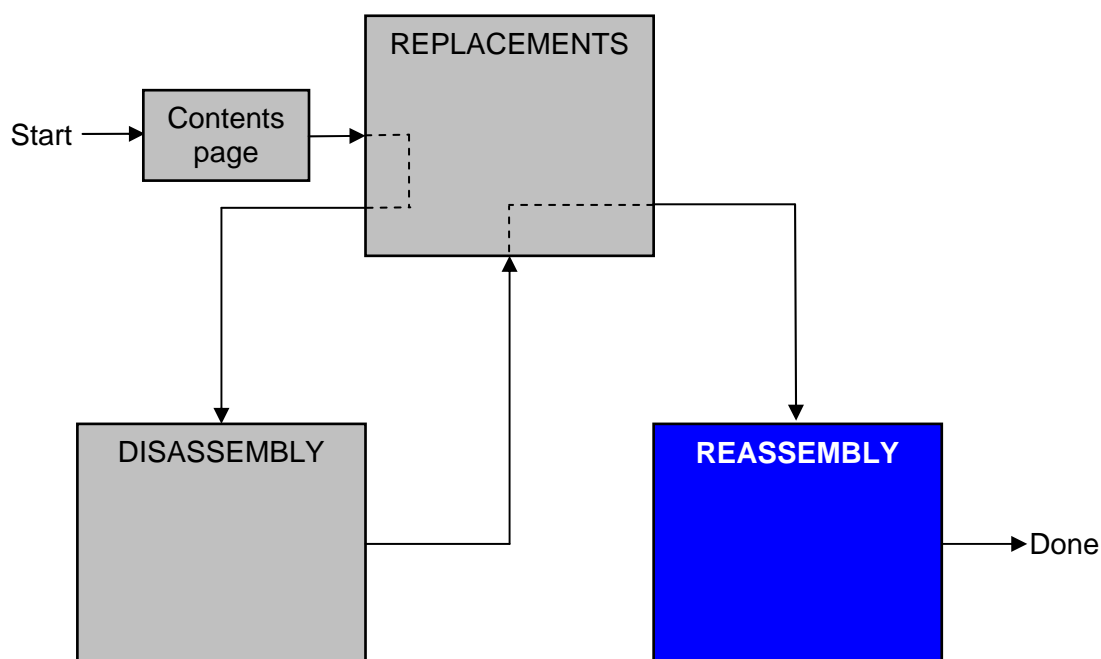


Press around Receiver Cover.



4 Reassembly

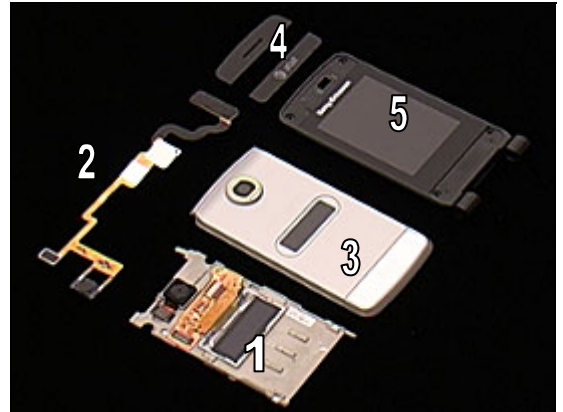
After replacing a part being listed in Replacements, the instruction of that section usually ends by directing you to this Reassembly section with a specification of the instructions you have to carry out in order to reassemble the phone.



4.1 Upper unit

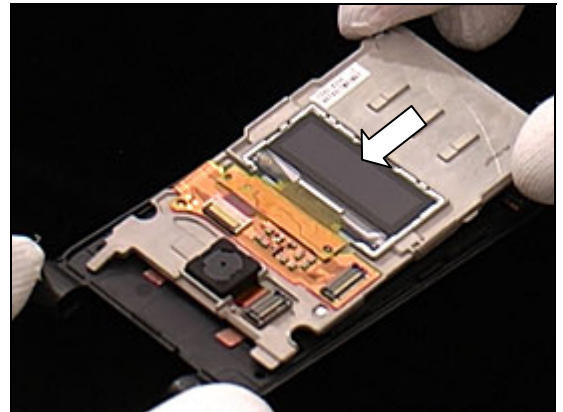
The reassembly is done in the following order:

1. LCD Frame and Upper Inner Cover Assembly
2. Hinge FPC
3. Upper Outer Cover Assembly
4. Co-brand Down and Receiver Cover
5. Upper Inner Cover

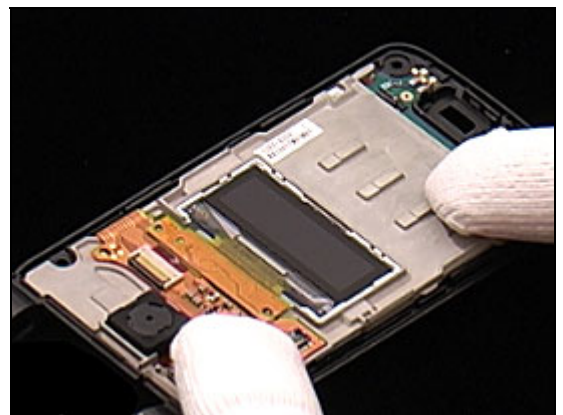


4.1.1 LCD Frame and Upper Inner Cover Assembly

Insert the LCD frame into the hinge section.

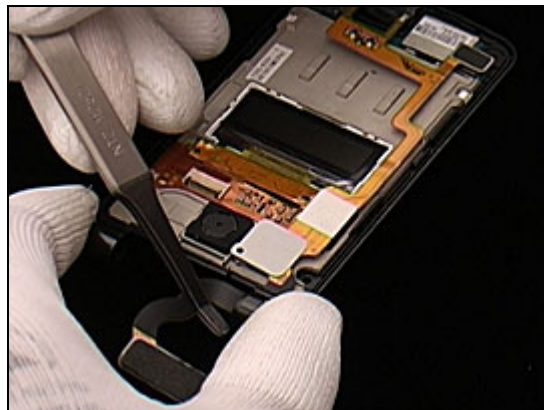


Use your fingers to snap it into the cavity of the inner cover assembly.



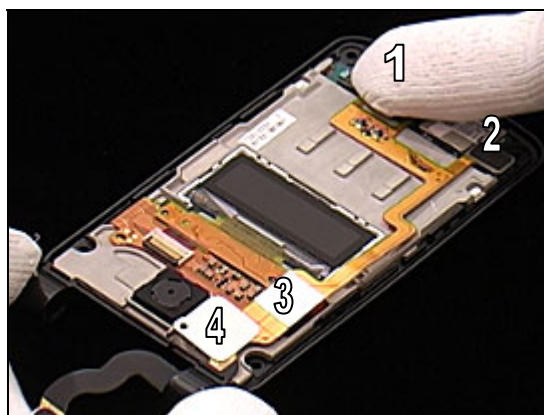
4.1.2 Hinge FPC

Use a flex film assembly tool to slide the FPC smoothly into the hinge section.



Use your fingers to connect receiver (1), GPS connector (2), LCD connector (3) and camera connector (4) on the FPC.

Use your fingers to press and secure the attachment.



4.1.3 Upper Outer Cover Assembly

Position the upper outer cover assembly.



Press with your fingers on the upper outer cover to snap it to the upper inner cover assembly on the sides.



4.1.4 Co-brand Down and Receiver Cover

Use torx bit T5 to tighten the four screws to a torque of 12Ncm.

Note: For mobile phone equipped with co-brand film, the damaged co-brand film must be scrapped.

Follow 3.21 Replacement Instructions.



Use a flex film assembly tool to position the co-brand down.



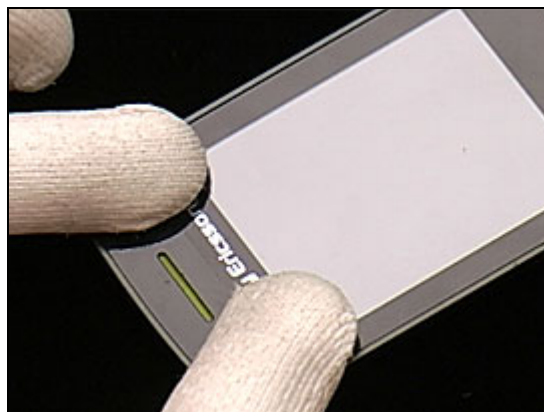
Use your fingers to press the co-brand down.



Use a flex film assembly tool to position the receiver cover.



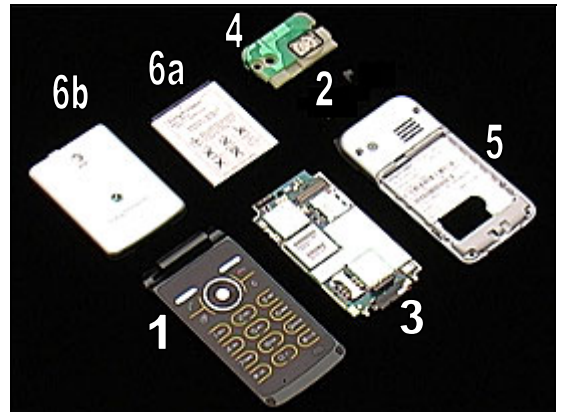
Use your fingers to press the receiver cover.



4.2 Lower unit

The reassembly is done in the following order:

1. Lower inner Cover Assembly
2. Hinge Stopper
3. PCBA
4. Speaker Box
5. Lower Outer Cover Assembly
6. Battery (a) and Battery Cover (b)



4.2.1 Lower Inner Cover Assembly

Follow 3.12 Installation instructions.

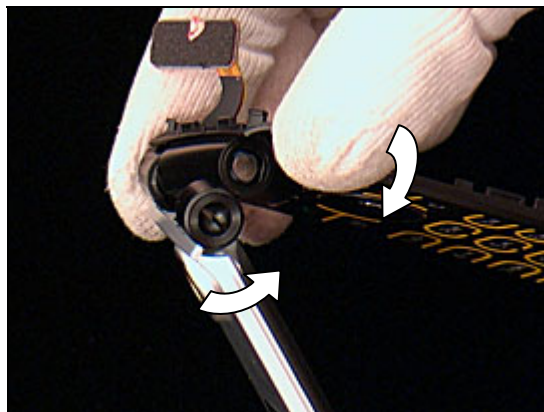
Use your finger to push the 80-pin connector on the hinge FPC smoothly through the hinge section.

Note: Be careful not to damage the 80-pin connector.



Slide the FPC through the hinge section.

Use your fingers to press and push the lower inner cover onto the hinge section.



Make sure the lower inner cover is joined together with the upper unit.

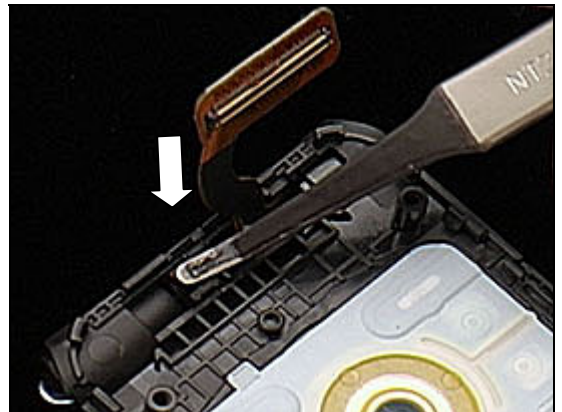


4.2.2 Hinge Stopper

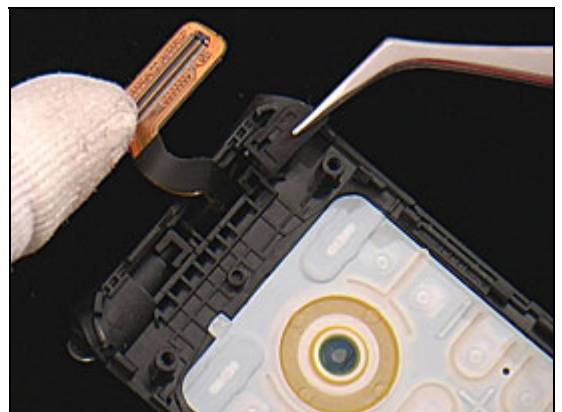
Use a flex film assembly tool to push the hinge into place.



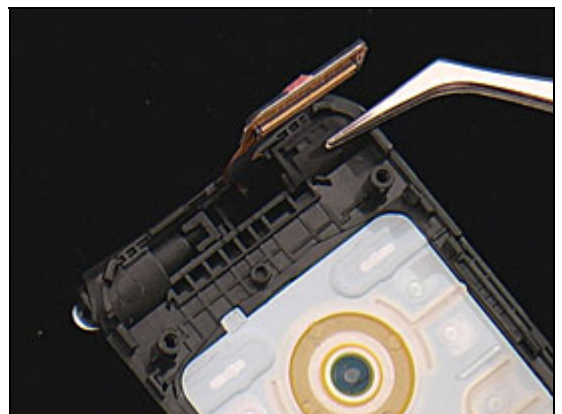
Position the hinge stopper in its place.



Use a pair of tweezers to attach the water proof rubber in place.

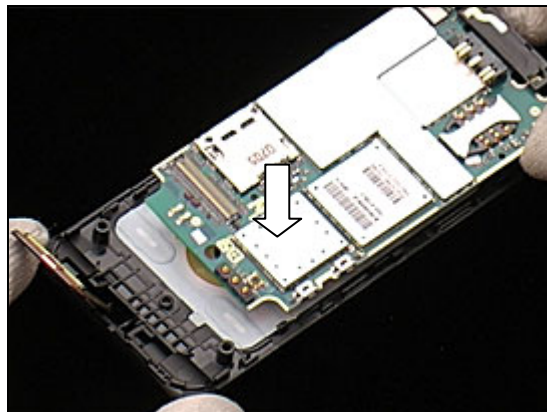


Press it to secure the attachment.

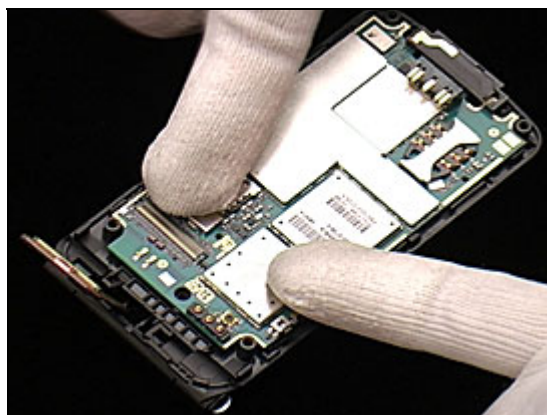


4.2.3 PCBA

Use your fingers to position the PCBA in place.



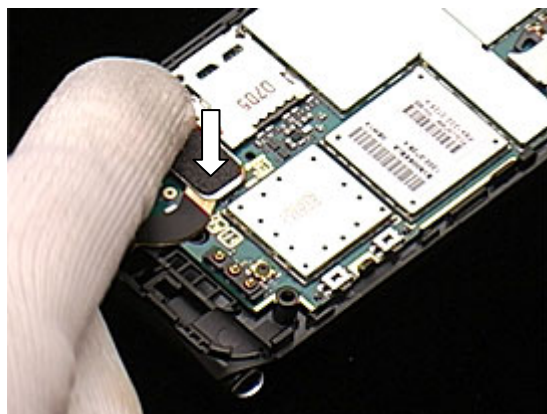
Use your fingers to snap the PCBA into the lower inner cover assembly.



Visually inspect that the PCBA is correctly positioned.

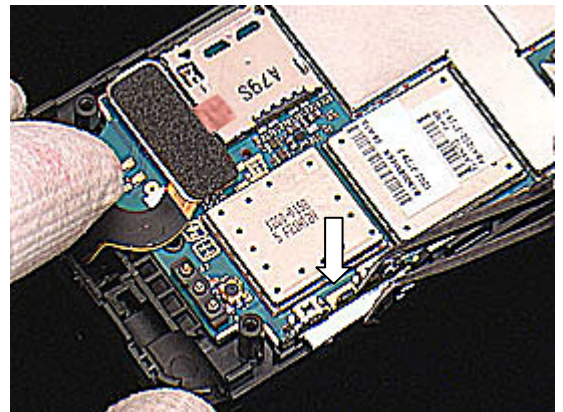


Connect the 80-pin connector of the FPC to the PCBA.
Note: Fold the copper foil back from the gasket after reconnecting the 80-pin connector.



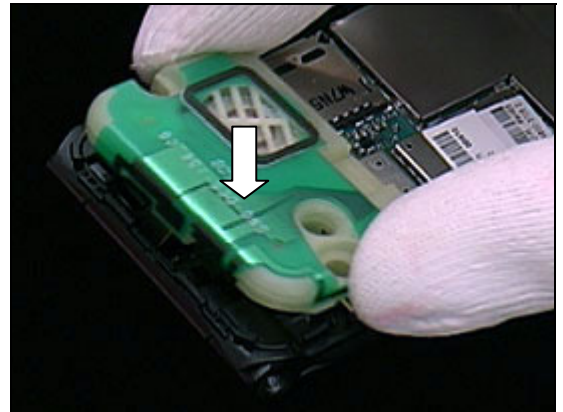
Use a flex film assembly tool to install the volume key.

Note: The long end and the short end of the volume key must be put in the corresponding slot.

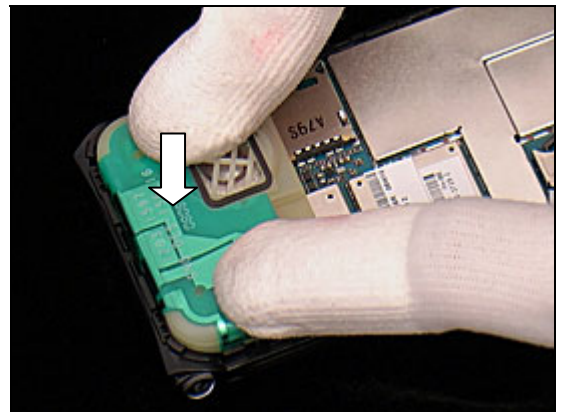


4.2.4 Speaker Box

Use your fingers to position the speaker box.



Use your fingers to snap the speaker box.



4.2.5 Lower Outer Cover Assembly

Position the lower outer cover assembly in place.



Insert the hook of the M2 card cover underneath the lower outer cover.



Use your fingers to snap the lower cover assembly.



Use your finger to close the M2 card cover.



Use the torx bit T6 to tighten the four screws to a torque of 18Ncm.



Use a flex film assembly tool to position one screw cover.



Use a flex film assembly tool to press the screw in place.



Use a flex film assembly tool to position the other screw cover.



Use a flex film assembly tool to press the screw in place.

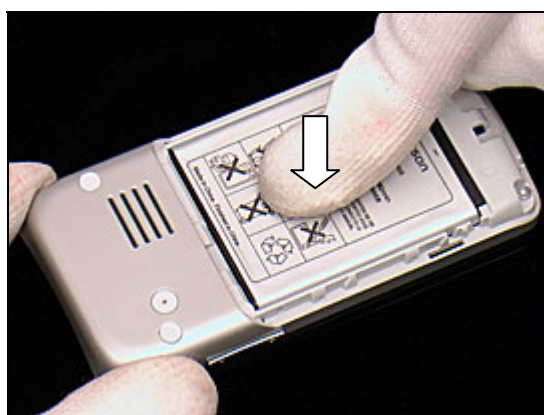


4.2.6 Battery and Battery Cover

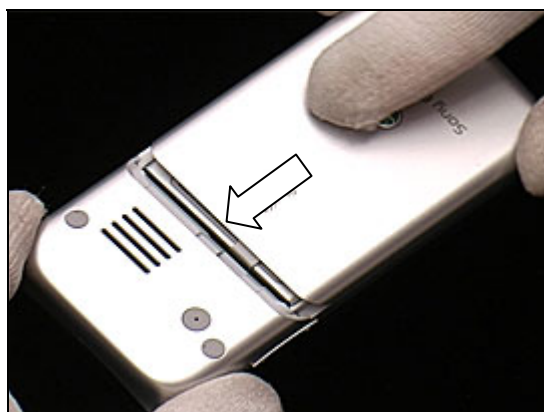
Position the battery into the lower outer cover assembly.



Use your fingers to press the battery down into its cavity.



Position the battery cover in place.



Use your fingers to slide the battery cover onto the lower outer cover assembly.



5 Revision history

Rev.	Date	Changes / Comments
1	2008-06-10	First release
2	2008-07-03	Page 52: add notes about indicator 3 position.
3	2008-07-21	Adding TM506 project, inserting TM506 photo on page 2. Page 53: indicator 3 position notes updated.
4	2009-3-26	Adding 3.33 Receiver mesh in replacement chapter.